

# TULIP

## SUPPLIES

Paverpol 50 grams per tulip  
Bamboo garden stick 90 cm for tall tulips (or sturdy wire 30 cm for the shorter ones)  
Foil  
Masking tape  
Old T-shirt (bamboo stick version) other non stretchy cotton fabric (silk, sheet/bedding, muslin)  
Good quality acrylic paint

## Construct the frame

Cut bamboo stick or wire to desired length.  
With foil shape a tulip at the end of the bamboo stick. (or wire)  
Tape the bottom of the tulip to the stick/wire  
Cut the fabric (see next page).

## Paverpol the fabric

Take one of the rectangles dip it in Paverpol (don't soak it so it drips!), work the Paverpol in the fabric and wrap it tight over the top of the tulip. Use the other pieces to completely cover the foil. It is very important that NO RAIN can come between the t-shirt and the fabric. These rectangles are to make sure the foil is covered and that there won't be any leaks.

Use the oval pieces of fabric to create the look of a tulip. The more folds and texture you create the nicer it will look when you paint it later.  
When you use Paverpol Bronze, the bronze will start to shine when you brush another coat of Paverpol on the tulip after it has dried.

Optional: Leaves.

Once paverpolled and attached to the stem, hang the tulips upside down so the leaves can dry 'standing up straight'.



## Dry Brushing with Acrylic Paint

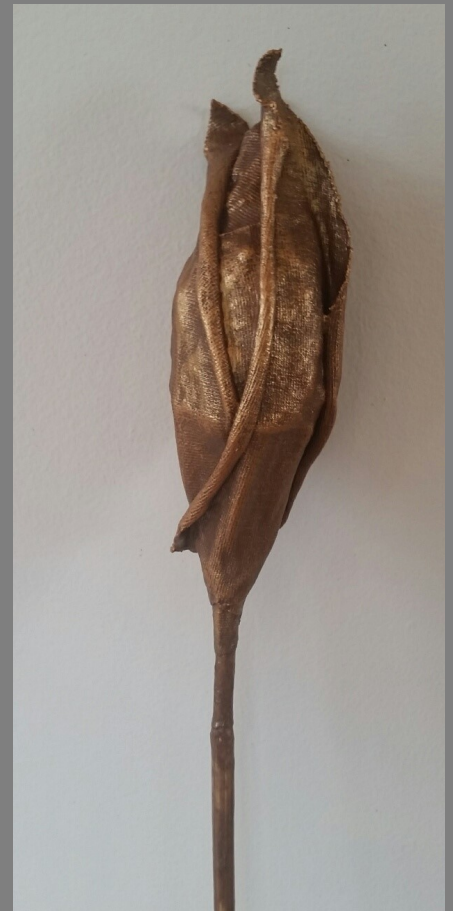
Used in this picture Reeves acrylic paint Bronze.

Pick up some paint with your brush in the and wipe it off on some paper towel (the more dry your brush the better the result will be). Hold the brush flat, almost parallel to the surface of the tulip and brush on the paint, dragging over the surface.

It is called dry-brushing because your brush needs to be really 'dry' to avoid blobs of wet paint on your tulip. Apply as much paint as you want but make sure you still see some of the original color of the object underneath. This way the paint will give contrast and depth to the object.

You can go over the surface with different color paints.

Please note that an object made with Paverpol needs to cure for 2 weeks before placing it outside. If you wish to varnish it, wait for 2 weeks as well.



Tutorial by

Shorter version approx. 30 cm tall

# TULIP

## Cutting the fabric.

1. Per tulip cut a few (3) rectangle shaped pieces of fabric, 4 cm wide and 8 cm long. You might need less than 3 or more than 3 depends on the size of your flower. These are used to 'just' cover the foil making sure that no water is able to get in between the foil and fabric.

2. Depending on which tulip you want to make;

Picture below left T-shirt material was used. (for the outside of the tulip)

Cut ovals the length of the foil and the width of the foil tulip (see red below). Cut approx. 4 per tulip.

In the picture below right, muslin was used (or sheets/bedding cotton).

Cut a few rectangles (3?) as wide as the height of the tulip (+1 cm) and 10 cm long.

Simply wrap these around the tulip, randomly making folds and squeezing the fabric together at the top.

3.

Optional; leaves.

Use a non-stretchy cotton like muslin or sheets/bedding. Cut them to desired shape.



Taller bamboo stick version approx. 90 cm tall.  
Made with t-shirt.



Shorter version approx. 30 cm tall. Made with muslin (or sheets/bedding)